



LIFT OUT SAFETY RAIL

- All Lift Out parts are made to order.
- Easy access to electrical panels, dock areas, machinery and utilities.
- Easy installation with anchors included with columns.
- 5,000 lb. load at 4 mph rating.
- Bright OSHA yellow powder coated finish.
- The Lift Out rails are constructed differently than our standard bolt on rails.
- Lift Out brackets are welded to the column. The column layout must be specified, end, middle, corner or continuous (Lift Out rail on one side and bolt on rail on the opposite side).
- Columns are 4" square high strength steel tube.
- Baseplate is 10" square x 5/8" thick steel, and can be offset if needed.
- Rails are 11 gauge high-tensile steel formed into a two rib corrugated design with two secondary ribs.
- Special / Custom lengths available in 1" increments. Consult factory for additional lead-time & costs.

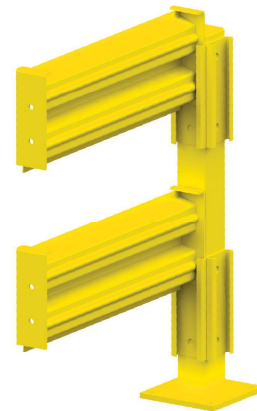


MODEL # DESCRIPTION

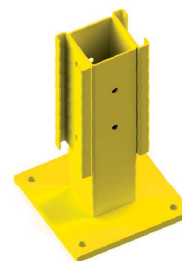
C1LOEND	18" Single Rail Column Lift Out End
C1LOMID	18" Single Rail Column Lift Out Middle
C1LOCNR	18" Single Rail Column Lift Out Corner
C1LOCON	18" Single Rail Column Lift Out Continuous
C2LOEND	42" Dual Rail Column Lift Out End
C2LOMID	42" Dual Rail Column Lift Out Middle
C2LOCNR	42" Dual Rail Column Lift Out Corner
C2LOCON	42" Dual Rail Column Lift Out Continuous

MODEL # DESCRIPTION

RL010	10' Lift Out Rail
RL09	9' Lift Out Rail
RL08	8' Lift Out Rail
RL07	7' Lift Out Rail
RL06	6' Lift Out Rail
RL05	5' Lift Out Rail
RL04	4' Lift Out Rail
RL03	3' Lift Out Rail
RL02	2' Lift Out Rail



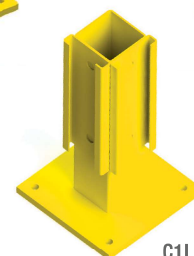
C3 version not available in Lift Out design



C1LOMID



C1LOEND



C1LOCNR